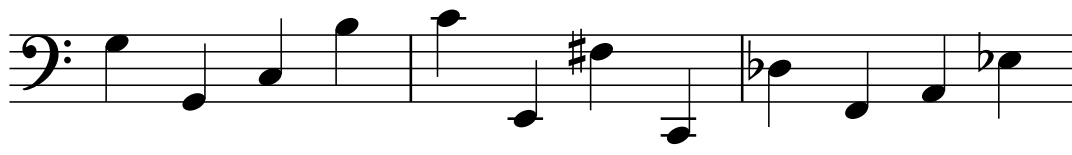


Use the lessons and information on www.musictheory.net to help you if necessary

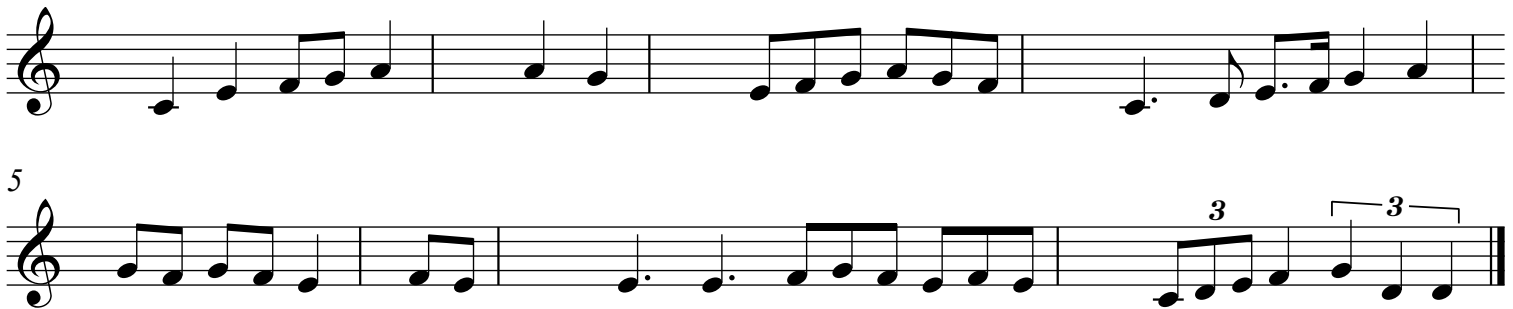
1

Write the name of each **pitch** on the dotted note beneath each **notated** note on the treble and bass staves below:



2

The **time signature** changes in each bar of the melody below. Insert the correct time-signature at the start of each bar. (You may need to research notation rhythm symbols to help you. Add the number of beats of each note to work out the time-signature).

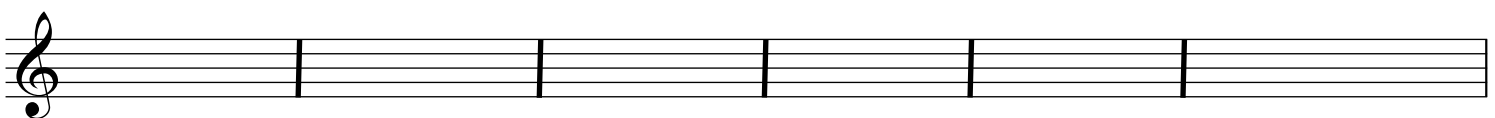


3

Label each of the following key signatures with the correct major and minor keys on the dotted line.



Write out the key signature above each of the labels below:



D major

G minor

Ab major

F major

B minor

A major

4

Add 2 notes to construct each of the chords labelled below. Use the first example as a guide:

F C D G Ab F C D F# B G D E A
 major minor major minor major minor diminished augmented major minor augmented minor diminished major

Ensure where necessary you have included the correct sharps or flats

5

On the staves below, write out the following cadences and label each one correctly.

- Perfect Cadence in G major and F major
- Imperfect Cadence in E major and Bb major
- Plagal Cadence in D major and Eb major
- Interrupted Cadence in C major and F major

